

# TB745



**TOTALCOMP  
TB745**

## Hermetically Sealed Stainless Steel Beam Load Cells

- ✓ Washdown safe.
- ✓ Hermetically sealed.
- ✓ Stainless steel construction.

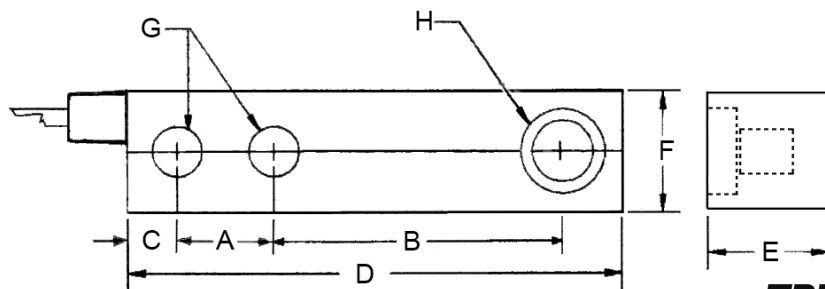
- ✓ Low profile design.
- ✓ Capacities from 500 lbs to 10K lbs.
- ✓ Interchangeable with Toledo for 745 mount beam cells.



**Totalcomp**® Scales & Components

# SPECIFICATIONS

# TB745



**TB745**

## TB745 TOTALCOMP BEAM LOAD CELL

The *Totalcomp* TB745 series beam load cells are interchangeable with Toldeo beam load cells for 745 mount. They are built to meet or exceed all manufacturers specs for this type of cell. They are constructed from Stainless Steel for washability and protection from harsh environments.

Part Number	Capacity	Weight	A	B	C	D	E	F	G	H
TB745-500-SS	500 lb	3 lb	1.00	3.00	0.62	5.18	1.10	1.19	0.515	.950
TB745-1K-SS	1,000 lb	3 lb	1.00	3.00	0.62	5.18	1.10	1.19	0.515	.950
TB745-1.25K-SS	1,250 lb	3 lb	1.00	3.00	0.62	5.18	1.10	1.19	0.515	.950
TB745-2.5K-SS	2,500 lb	3 lb	1.00	3.00	0.62	5.18	1.10	1.19	0.515	.950
TB745-2.5K-SS-30 w/ 30 ft cable	2,500 lb	5 lb	1.00	3.00	0.62	5.18	1.10	1.19	0.515	.950
TB745-4K-SS	4,000 lb	3 lb	1.00	3.00	0.62	5.18	1.10	1.19	0.515	.950
TB745-5K-SS	5,000 lb	4 lb	1.50	3.75	0.62	6.65	1.63	1.45	0.780	1.37
TB745-10K-SS	10,000 lb	6 lb	1.50	3.75	0.62	6.75	1.63	1.65	0.75	1.37

### Performance

**Full Scale Output**  
2.00 mV/V

**Combined Error**  
±0.03% FS

**Nonlinearity**  
±0.03% FS

**Hysteresis**  
±0.03%

**Creep**  
±0.03% FS in 1 hour

**Non-Repeatability**  
±0.01% FS

**Zero Balance**  
±1.0% FS

**Overload Safe**  
150% FS

**Overload Ultimate**  
300% FS

### Electrical

**Bridge Resistance**  
Input 390 ohms  
Output 350 ohms

**Excitation Voltage**  
5 VDC (15VDC Max)

**Insulation Resistance**  
5KMohms@50VDC

### Temperature

**Compensated Range**  
-10°C to +40°C

**Temperature Operating Range**  
-40°C to +80°C

**Effect on Zero Balance**  
0.0013% FS/deg F

**Effect on FS Output**  
0.0007% FS/deg F

### Mechanical

**Material**  
Stainless Steel

**Finish**  
Aluminum Oxide

**Sealing**  
IP67

### Wiring

**Cable Length & Type**  
4 conductor  
500 lb - 15 ft  
1k - 20 ft  
1.25 k - 10 k - 15 ft  
2.25 k-30 - 30 ft

### Cable Color Code

+ Excitation.....Green  
- Excitation.....Black  
+ Output.....White  
- Output.....Red  
Shield.....Yellow

### TOTALCOMP LIMITED WARRANTY

*Totalcomp* warrants this product to be free of defects in materials and/or workmanship and suitable for the purpose(s) intended as outlined on this sheet. This warranty is effective and shall cover the purchaser for one year from the date of shipment from our plant. If this product is found to be defective by our inspection in accordance with the above listed criteria, we will replace or repair it at our expense. For warranty service, please obtain a return authorization number from us and return the item, shipping prepaid, with a written description of the problem. We will respond promptly with the results of our evaluation.